



LEARNING TO SEW FOR BEGINNERS

Teddy bear pillow

-the boy-

AN ORIGINAL DESIGN

CREATED BY SEWTOY, 2020

Hi there!

Welcome. Thank you for purchasing the Teddy bear pillow tutorial & pattern.

The first teddy bear pillow I made for my 12-year son, and when my nephew turned 12, he wished for the same one! Like all my cute friends, this cute fellow has a secret power too! He can turn into a pillow in a second, so nobody will see that their new friend still loves to cuddle. :)

While making the cute teddy bear, you will learn the basics of how to make your own simple stuffed toys, and you will pick up a few tips & tricks on the way too.

I hope you will enjoy sewing your teddy bear pillow as much as I enjoyed making it.



Maja

Finished size

If you use fleece for the body, the finished size depends on the way you will cut it because the fleece only stretches to one direction and this will impact the final size:

↕ stretch: approximately 34 cm x 44 cm / 13.5 in x 17.5 in

STEP 1: Prepare all materials

- Body:** 2x Fleece or other soft material (40 cm x 50 cm / 16 in x 20 in). If you use the fleece, check the direction of the stretch and decide, would you like the teddy bear to be a bit taller or wider? [Check the tip on page 3 before cutting!](#)
- Eyes:** white and black felt
- Snout:** Black felt
- Mouth:** black embroidery thread
- Sewing thread
- Toy or pillow stuffing**
- Pattern** (pages 7 to 10)
- Cheeks:** fleece or felt (I've used light brown fleece.)



General requirements:

sewing machine, pins, needle, scissors, trick marker, or chalk.



WHY I RECOMEND USING WOOL AND NOT ACRYLIC (CRAFT) FELT?

Wool felt is the most durable type of felt, has less fuzz than other felts, and it will not pill. Under the fingers has soft, luxurious fill. It is thicker, has a slight elasticity, so it can be manipulated and shaped. 100% natural wool is stain and water-resistant, flame resistant and self-extinguishing, anti-bacterial, anti-bacterial, ecologically and animal friendly. Although it is more expensive than acrylic (craft) felt, in my opinion, wool felt is in a long run totally worth a bit higher

STEP 2: Cutting all pieces

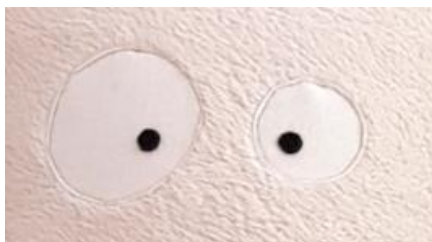
- Print the Teddy bear **pattern** (pages 7 to 10). Cut all the pieces from the paper, assemble pieces 1 to 4 and tape them together. This is your template.



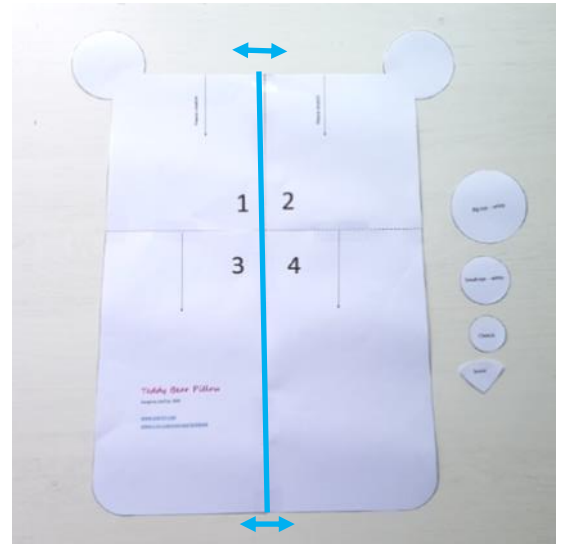
TIP! If you would like your teddy bear to be wider like the dark brown on the first picture, just add a 4 centimeters (2 in) between the 1 & 2 and 3 & 4. marked on the picture with a blue line. AND don't forget to cut a little wider pieces of fabric for the body!

- Put the body fleece pieces on top of each other right sides together.
- Position the template on top. Pin everything together.
- Trace the template with the trick marker or chalk—you will use this line for sewing the teddy bear together later. Cut the fleece leaving a good 1,5 cm / 0.5 in for seam allowance.

- Cut the cheeks and snout from the fabric—no seam allowance.
- Cut the eyes from the felt. White and black part. You can make both eyes the same size, or one eye bigger than the other, like this:



- Separate body pieces. We will use the one, that has a template traced on the back. Turn this piece right side up.
- Position eyes, cheeks, and snout. Pin.
- Draw the mouth with the trick marker or chalk.



STEP 2: Sewing the face

THE MOUTH

Embroider the mouth with black embroidery thread (thicker one) or thin wool using the **STEM stitch**.

THE STEM STITCH

The stem stitch is an embroidery stitch in which each stitch overlaps the previous stitch to one side. You start on one side and each time return back to the previous stitch, the thread being below or above the mouth all the time:



THE SNOUT & CHEEKS

Sew the snout and cheeks to the place with the regular seam on your sewing machine. Use short stitches, sew close to the edge, slowly. Select the sewing thread that matches the snout / cheeks.

THE EYES

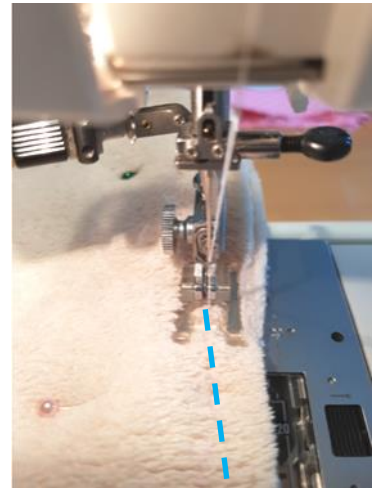
Sew the black part of the eye on the white part by hand using a running stitch or with the machine using a regular seam. Use very small seams.

Then sew the eye on the body. Use regular seam on your sewing machine, short stitches, and go very slow. I have used the thread the same color as the body is. You can also use white or black, whatever looks better for you.

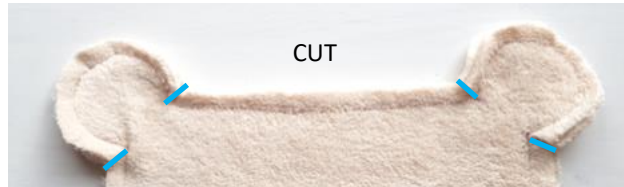


STEP 3: Sewing together

- Position the body pieces back on the top of each other right sides facing. Pin, pin, pin! You can not pin too much with the fleece.
- Sew the body together with the regular seam, follow the line you made with chalk or trick pen in step 2.
- Start sewing away from the opening. Leave the opening approximately 12 cm / 5 in wide, so that your hand will get inside when stuffing.



- Using scissors cut all the way to the seam where marked with a blue line on the picture below.
- It is not necessary, but you can at this point make a quick big zigzag all around, to stop fraying and make it more durable. Dont sew through the opening!

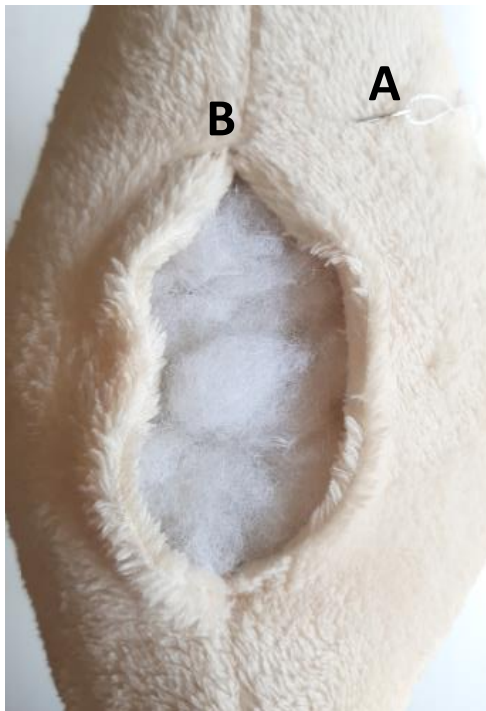
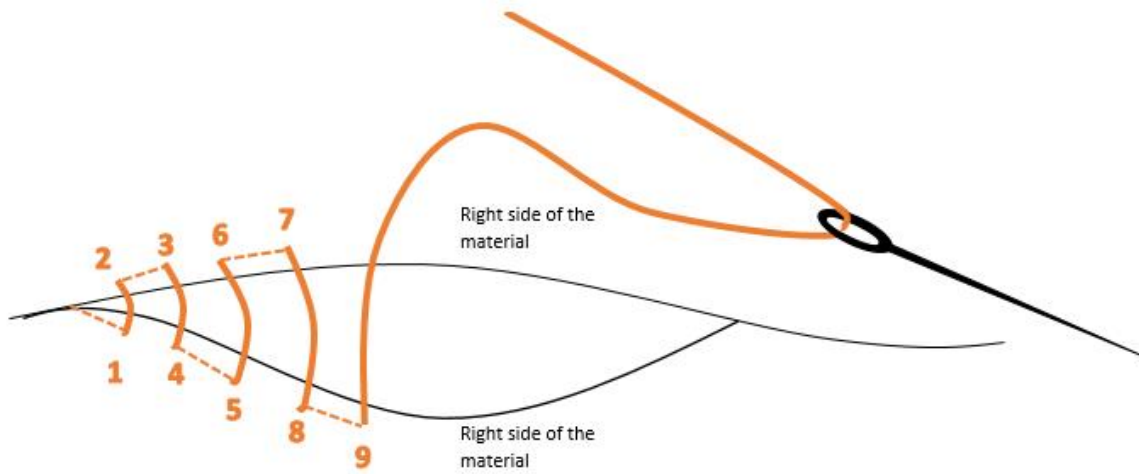


- Turn the pillow around through the opening. Position all the edges nicely from the inside.
- Stuff the teddy bear pillow through the opening tightly, you can not overstuff, promise. Push tightly into the ears and corners at the bottom part.

Very last thing to do is closing the opening with the **ladder stitch**.

THE LADDER STITCH

Ladder stitch is the best way to close the openings when sewing toys.



Stab the needle a few cm (inches) away from the opening (point A) and come out at the beginning of the opening (point B). Make three very little stitches there (instead of a knot) and cut the excessive thread at the point A.



Close the opening using the ladder stitch, follow the diagram above. When you reach the end of the opening, finish with three little stitches and hide the thread ending in the pillow (the same as you did at the beginning). Give a dog pillow a good massage to reposition the stuffing nicely.



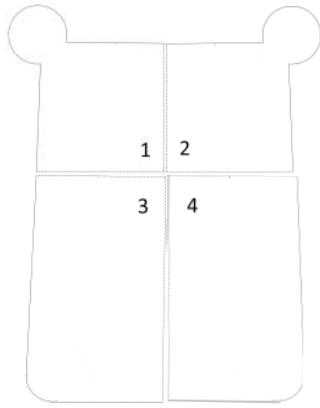
See, nobody will know the opening was here! :)

Congratulations!

You have made your very first playful & cute dog pillow. Do you like it? I would LOVE to see how it turned out. ↩

Let's connect & sew together!



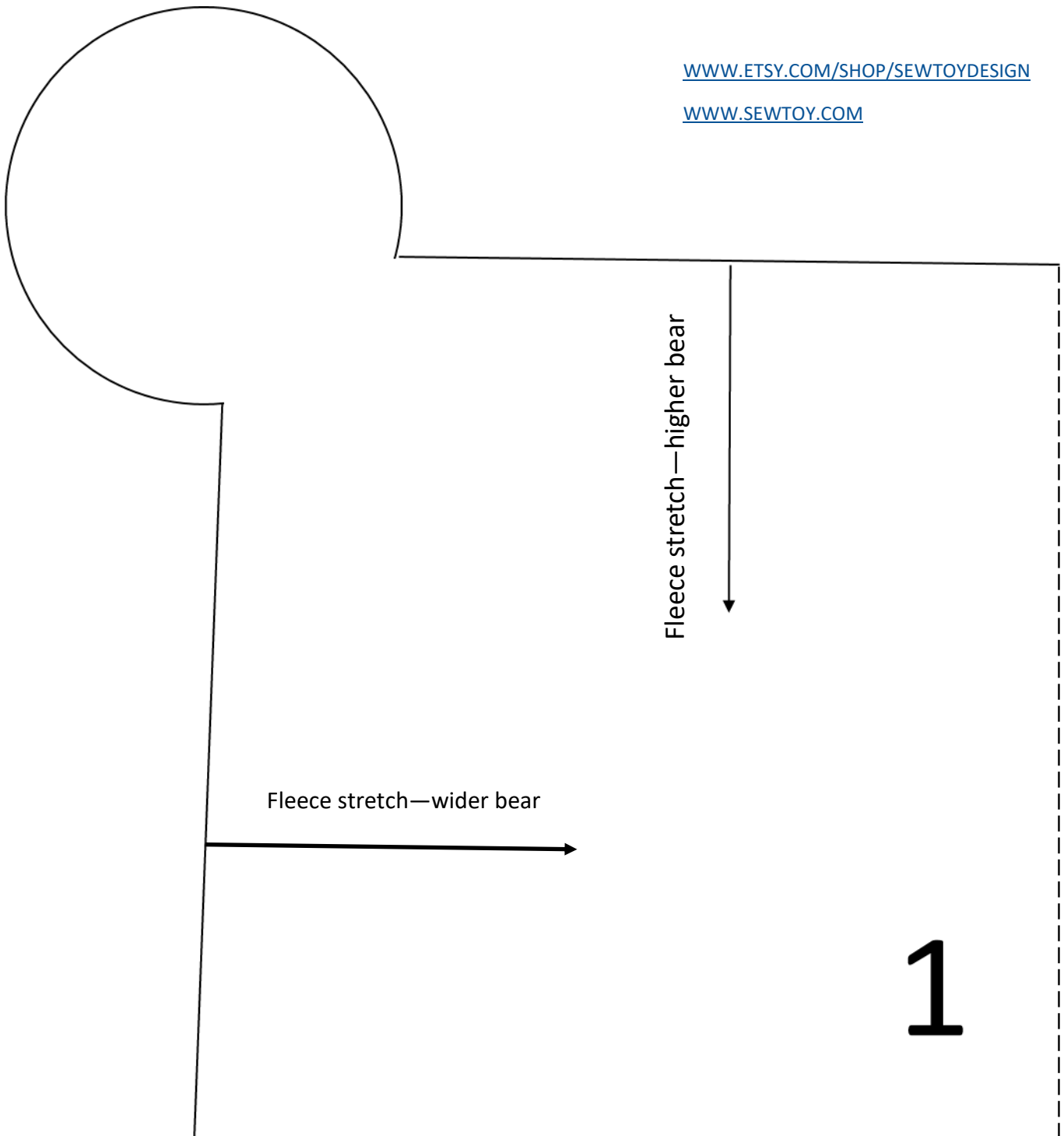


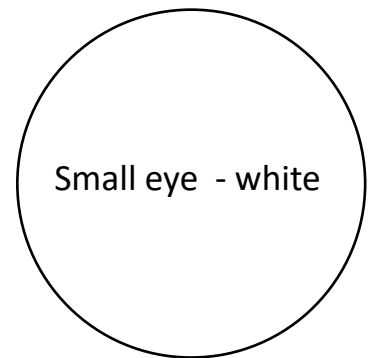
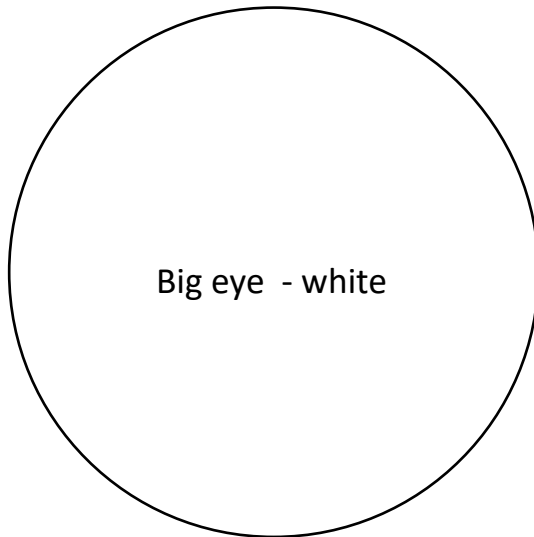
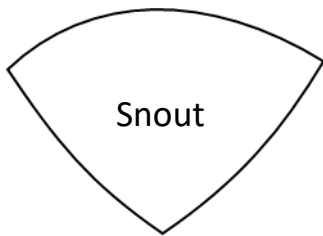
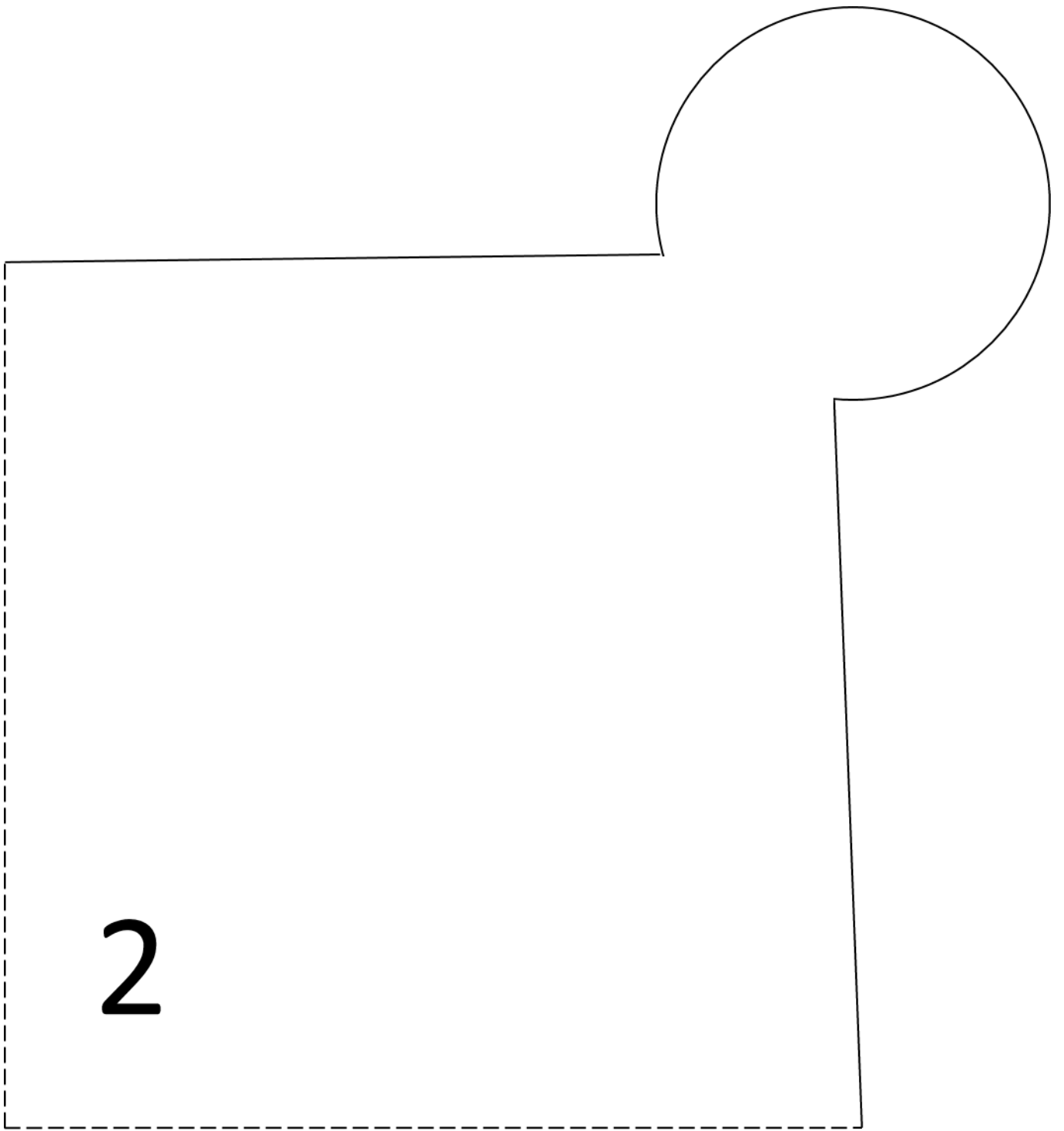
Teddy Bear Pillow

Design by SewToy, 2020

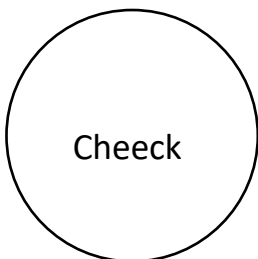
WWW.ETSY.COM/SHOP/SEWTOYDESIGN

WWW.SEWTOY.COM





Eye—black



Let's connect & sew together!

3

When cutting the fabric, add a good
1,5 cm / 0.5 in for seam allowance!

Teddy Bear Pillow

Design by SewToy, 2020

WWW.SEWTOY.COM

WWW.ETSY.COM/SHOP/SEWTOYDESIGN

4