



LEARNING TO SEW FOR BEGINNERS

# *Cute monsters*

AN ORIGINAL DESIGN

CREATED BY SEWTOY, 2020

## Hi there!



Welcome. Thank you for purchasing the Cute Monsters tutorial & pattern!

I like little monsters, but not the scary ones, only friendly monsters that are colorful, happy, and playful. I love their big eyes, being aware of every opportunity to play around and a big happy smile showing off their first milky teeth. They are not so different from my own two little monsters when their eyes sparkle full of fun ideas.

They might be small but have a big heart and the secret power— they will make sure no scary monsters will visit their human best friend. I hope you will enjoy sewing these cute monsters as much as I enjoyed making them.

Maja

## Finished size

Aproximately size with the hands: 25 cm x 23 cm / 10 in x 9 in

## STEP 1: Prepare all materials

- Colorful fleece 2x (23 cm x 28 cm / 9 in x 11 in)
- Cotton that goes nicely with the fleece color for arms, a great way to use scraps from other projects
- Embroidery thread: choose a vibrant color that is complementary to fleece color
- White and black wool felt for eyes and teeth
- White and black embroidery thread for eyes
- White sewing thread
- Toy or pillow stuffing
- Pattern (on the last page)

### General requirements:

sewing machine, pins, needle, scissors, trick marker, or chalk.



## WHY I RECOMEND USING WOOL AND NOT ACRYLIC (CRAFT) FELT?

Wool felt is the most durable type of felt, has less fuzz than other felts, and it will not pill. Under the fingers has soft, luxurious fill. It is thicker, has a slight elasticity, so it can be manipulated and shaped. 100% natural wool is stain and water-resistant, flame resistant and self-extinguishing, anti-bacterial, anti-bacterial, ecologically and animal friendly. Although it is more expensive than acrylic (craft) felt, in my opinion, wool felt is in a long run totally worth a bit higher investment, especially if you are making toys, pillow, or other stuff for kids with it.

## STEP 2: The body

- Print the Cute monster pattern on the last page and cut out the pieces.
- Prepare the fleece fabric—check the direction to which the fleece stretches (see the pattern for the direction). Because of the stretch, the monster should be taller and not wider. Put the fleece pieces on top of each other right sides together. Position the template on top. Pin everything together. Trace the template with the trick marker or chalk.
- Remove the template and pin it back. Mark with chalk or trick marker on the fabric where hands and the opening will come. Unpin and separate the body pieces.
- Cut the body out, leave the part between the feet (see the picture).



## STEP 3: The eyes

Take the body part that has pattern lines made with a trick marker. Turn it with the right side up.

Decide upon the number of eyes:

- one big eye and wink instead of the other eye
- One big and one small eye
- Three small eyes

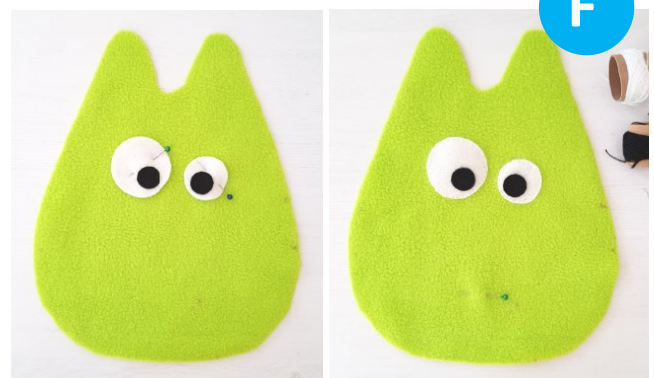
Position the eyes and pin the black eye parts on to the white eye parts.

- Sew the black and white eye parts together with a running stitch using black embroidery thread. Use small stitches.
- Next, sew the eye with a running stitch on the body with white embroidery thread. For a wink make a cross embroidery thread.

First black on white ...



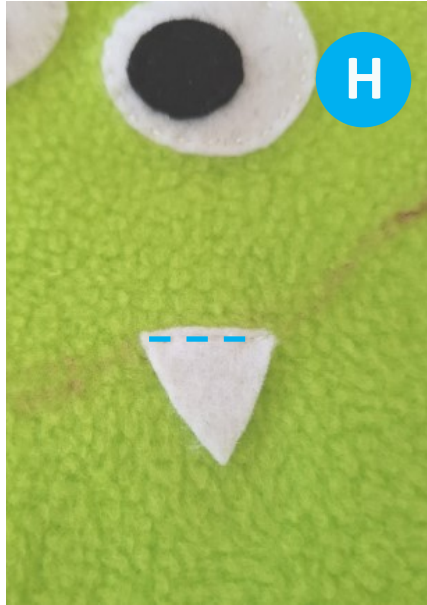
... then white on the body.





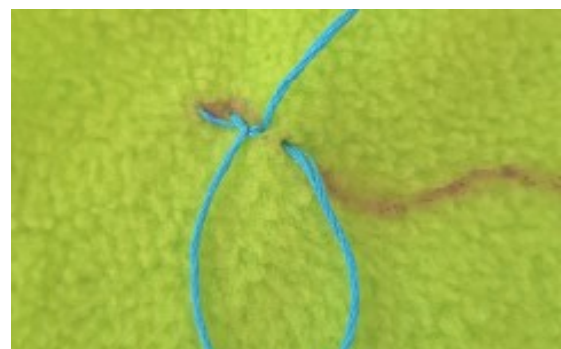
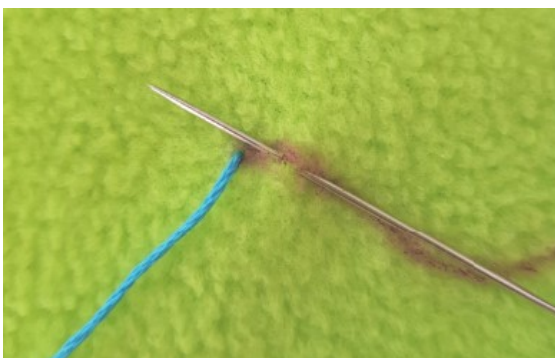
## STEP 4: The mouth

- G. Mark the mouth with chalk or trick marker. Position the tooth or teeth on to the mouth line. Pin.
- H. Sew a tooth with a sewing machine to the body at the top of the tooth—follow the mouth line.
- I. Embroider the mouth using the STEM STITCH. When you come to the tooth, embroider over the seam you made before.



### THE STEM STITCH

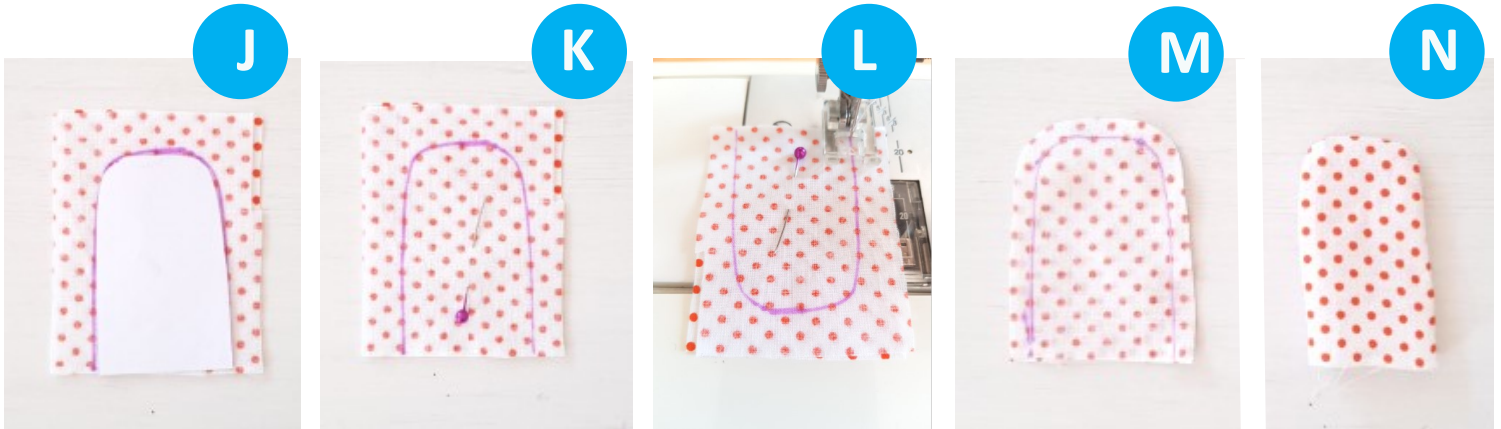
The stem stitch is an embroidery stitch in which each stitch overlaps the previous stitch to one side. You start on one side and each time return back to the previous stitch, the thread being below or above the mouth all the time:



*Let's connect & sew together!*

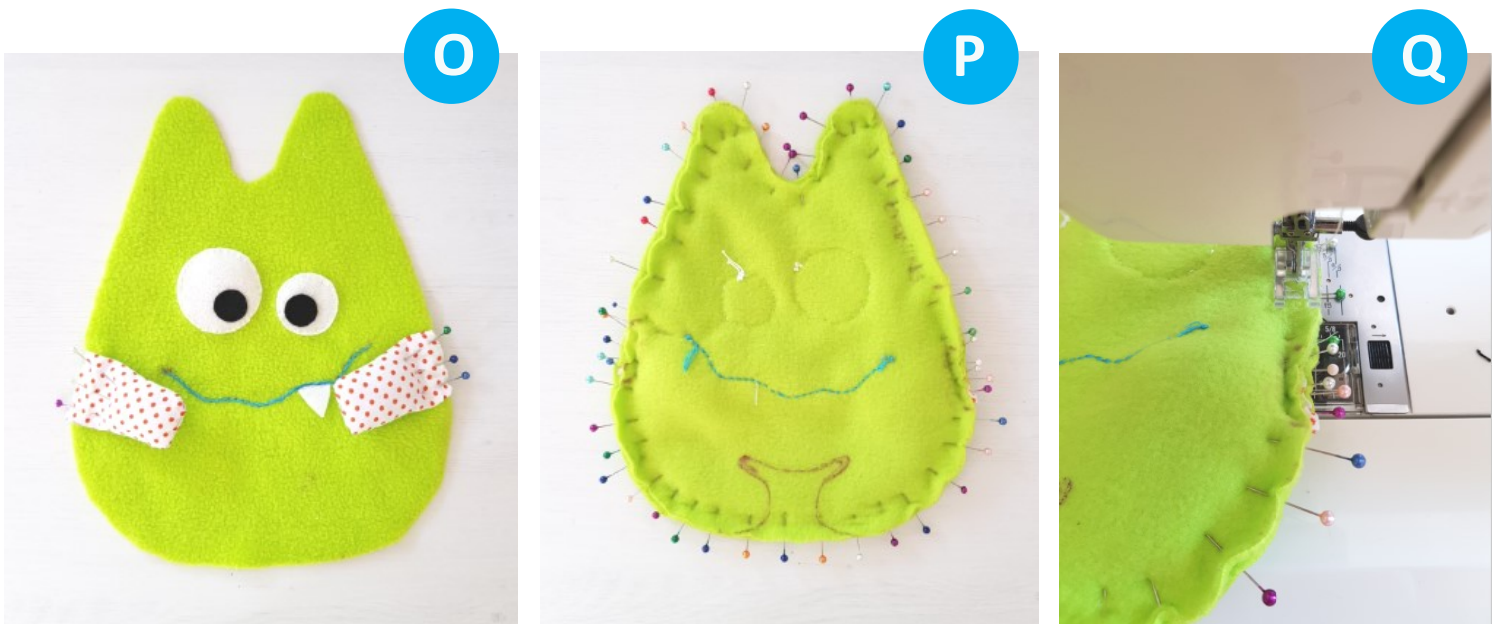
## STEP 5: The hands

- J. Put cotton pieces of fabric on top of each other right sides together. Position the template on top. Align with the bottom part of the hand template—see picture. Pin everything together. Trace the template with the trick marker or chalk.
- K. Remove the template and pin it back.
- L. Sew the hand together with the regular seam on the sewing machine, use smaller seam, go slow on edges, and leave the bottom part open.
- M. Cut off excess fabric, leave 0,5 cm / 1/4 seam allowance.
- N. Turn the hand around through the opening at the bottom. Stuff the hand.



## STEP 5: The magic—Putting everything together

- O. Pin stuffed hands to the place.
- P. Position the other body piece on the top right sides facing. Pin, pin, pin! You can not pin too much with the fleece.
- Q. Sew the body together with the regular seam, sewing at least 0,5 cm / 1/4 inch from the edge.
- R. Start sewing under the opening for the stuffing. Leave the opening open.

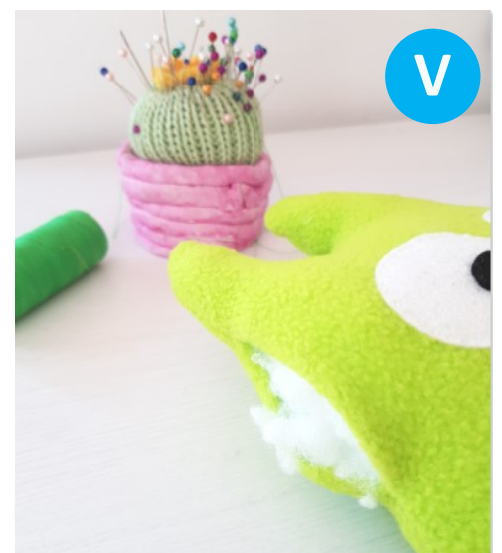


- R. When you get to the legs, follow the line between legs you made with chalk or trick marker.
- S. Cut off excess fabric, leave 0,5 cm / 1/4 inch seam allowance.
- T. Make small cuts in fabric seam allowance all the way to the seam—marked with blue ellipse on the picture.



### STEP 5: The stuffing

- U. Turn the monster around through the opening. Help yourself with a non-sharp stick (I use the wrong side of knitting needle) to position all corners nicely from inside.
- V. Staff the monster with stuffing. I have used polyester stuffing for pillows.

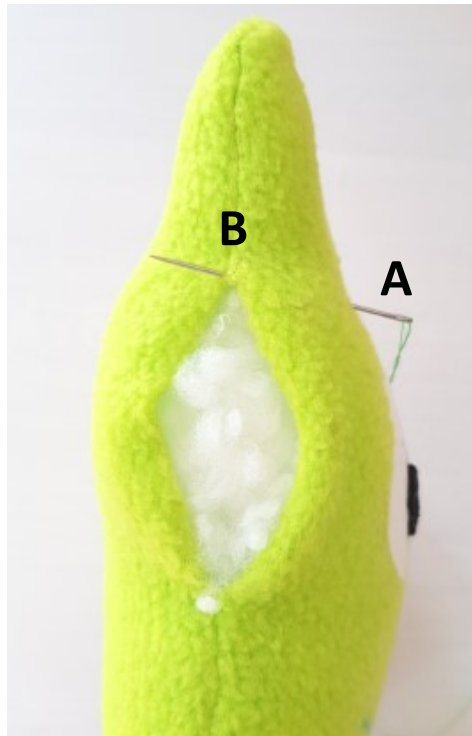
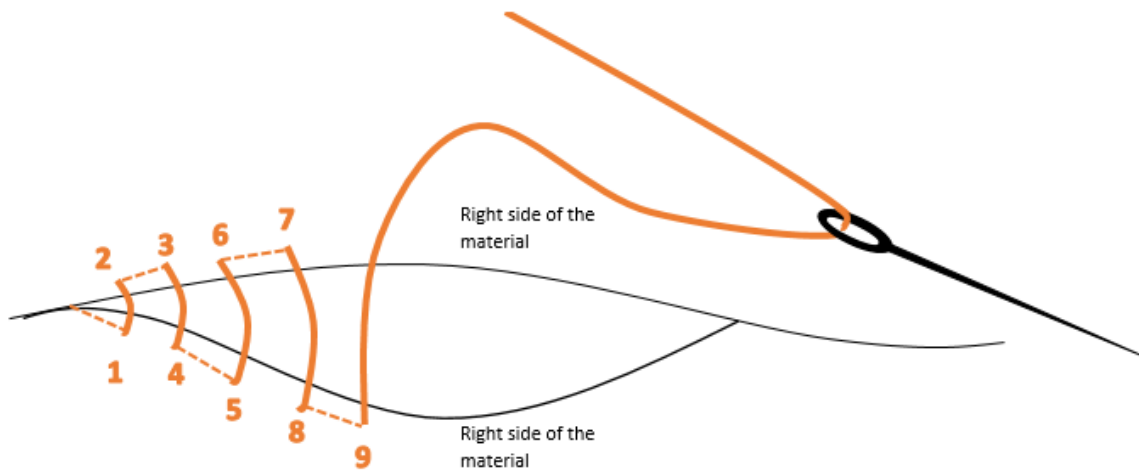




W. Close the opening with the **ladder stitch**.

## THE LADDER STITCH

Ladder stitch is the best way to close the openings when sewing toys.



Stuff the monster through the opening very tightly, you can not overstuff, promise. Push tightly especially into the ears and legs.

Stab the needle a few cm (inches) away from the opening (point A) and come out at the beginning of the opening (point B). Make three very little stitches there (instead of a knot) and cut the excessive thread at the point A.

Close the opening using the ladder stitch, follow the diagram above. When you reach the end of the opening, finish with three little stitches and hide the thread ending in the monster (the same as you did at the beginning). Give a monster a good massage to reposition the stuffing nicely.

*Congratulations!*

You have made your very first joyful, cute, colorful baby monster. Do you like it? I would LOVE to see how it turned out.

*Let's connect & sew together!*



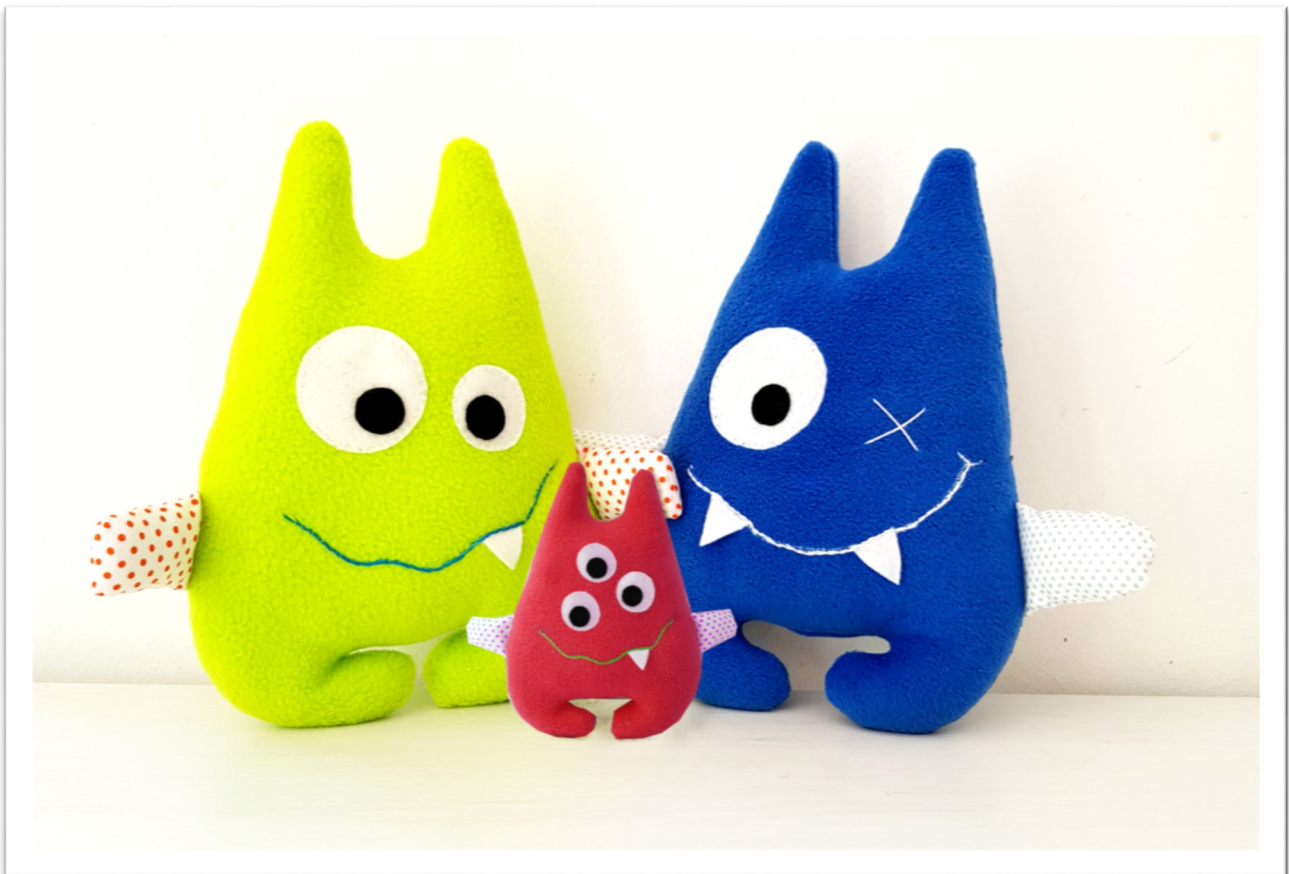
## HAVE FUN WITH DIFFERENT FACE COMBINATIONS!

Cute monsters is an easy & fun sewing project to do with your kids. Let them design their little monsters. Let them decide how many eyes their monster will have, how many teeth, what kind of mouth. Let them choose the fabric, colors they like.

You will have a fabulous time together, and the little monster you will create will be the most unique in the world.

I wish you lots of fun. Happy sewing!

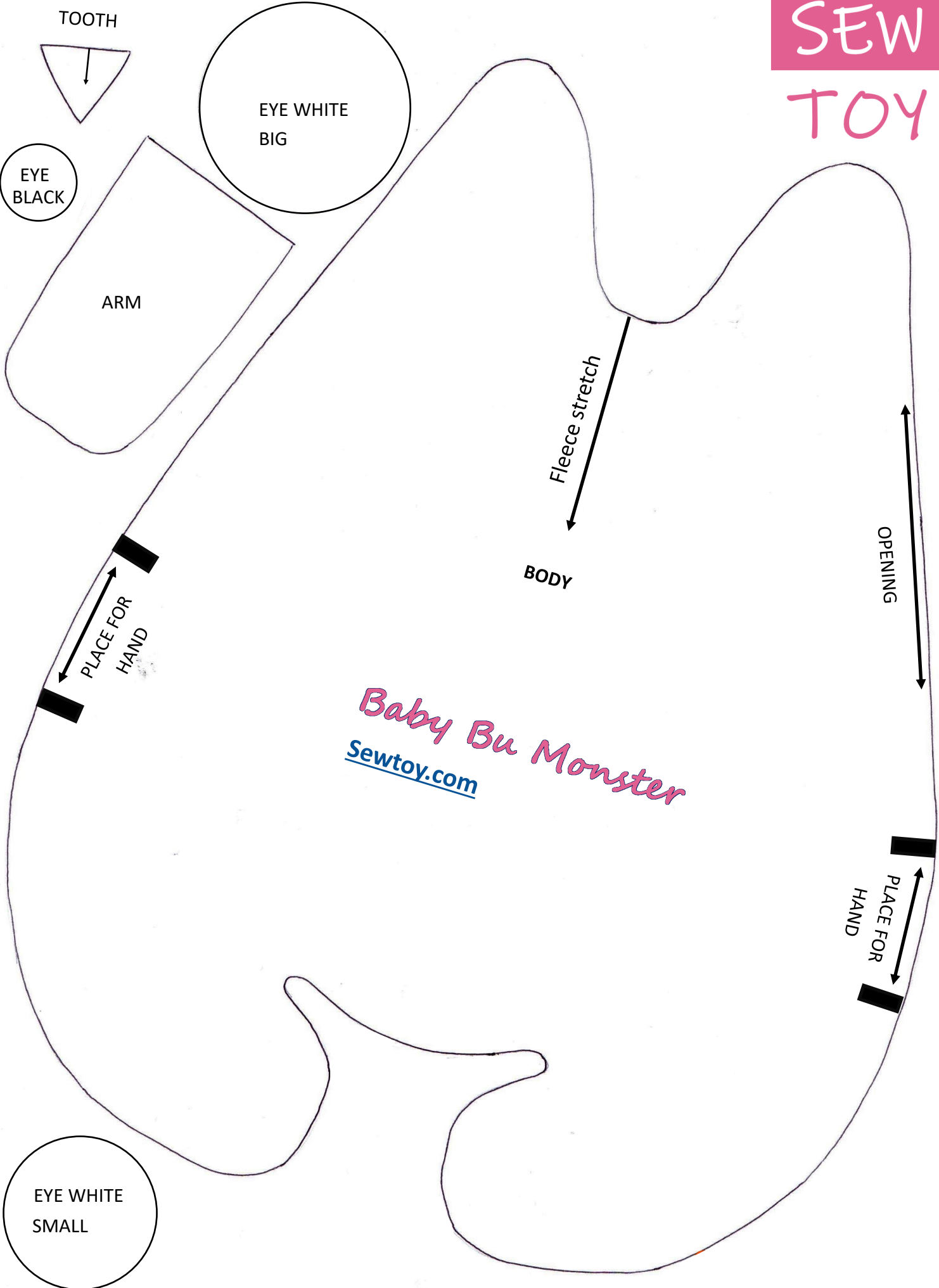
*Just a few combinations to get you started :)*





# SEW

# TOY



*Baby Bu Monster*  
[Sewtoy.com](http://Sewtoy.com)

Let's connect & sew together!

